

Châteaux-forts



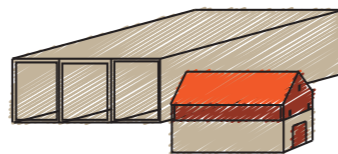
Hôtels particuliers
Maisons patriciennes



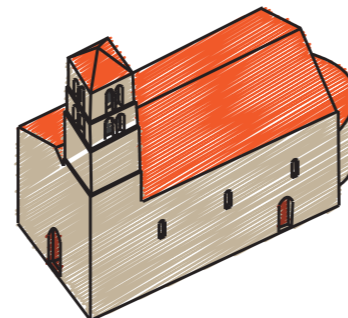
Maisons rurales



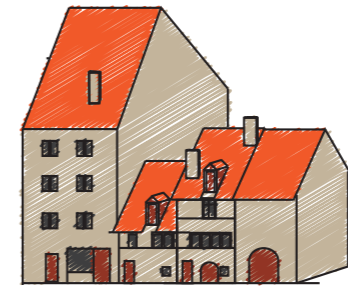
Maisons d'habitation
familiales



Hangars, granges,
garages, ...



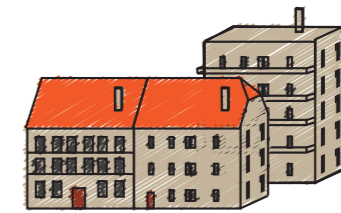
Edifices religieux



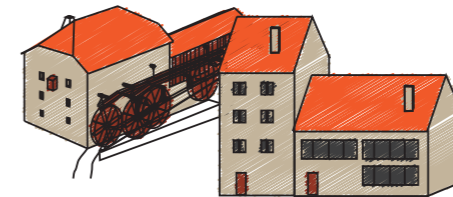
Maisons villageoises
et bourgeoises
en ordre contigu



Maisons de maître



Maisons locatives



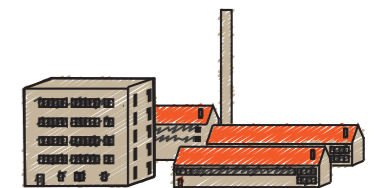
Petite architecture industrielle
(ateliers, moulins, scieries,
forges, ...)



Immeubles
administratifs et
commerciaux



Edifices publics
(hôtel de ville,
école, hôpital,
gare, poste, ...)



Manufactures et
fabriques



Petits équipements collectifs
(hangar des pompes
Poids public
Lavoir, ...)

etc...